

Version 1.1

Last update: June 15, 2022

certm:nd

 Syllabus

# Cybersecurity

Essentials

[www.certmind.org](http://www.certmind.org)



2022

# Content

• Scheme description .....	3
• Required skills and job description .....	4
• Skills Assessment .....	5
• Who should take this exam? .....	6
• Certification process .....	7
• Levels of Difficulty: Bloom's Taxonomy .....	8
• Renewal, surveillance and withdrawal of certification.....	9

# Cybersecurity Essentials

Our goal at CertMind is to certify the skills of professionals working in the Technology context. To achieve this, we seek to ensure that professionals demonstrate their skills and knowledge through the application of an International Certification Exam.

## Certification category

**Main category:** Security management

**Subcategory:** Information security



## Scope of certification

The purpose of the Cybersecurity Essentials Certification is to ensure that the professional has a practical understanding of the basic concepts, terminology, information security analysis, policies and regulations of cybersecurity.

## Prerequisites

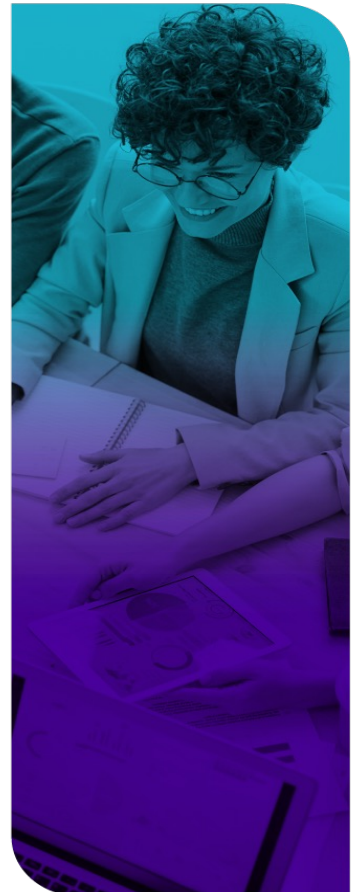
- Be of legal age, according to the minimum age determined by law (according to the National Identity Card that must be uploaded to the platform).
- Have basic knowledge of reading, writing and basic arithmetic: addition, subtraction, multiplication and division.
- Reading and acceptance of the Code of Ethics available on the platform before taking the certification exam.

## Code of Ethics

All certified professionals must know, accept and abide by the Code of Ethics, which is available for consultation on the platform.

## Recommendations

- It is highly recommended that the professional attends a formal Cybersecurity Essentials training of at least 12 hours, segmented into 4 sessions of approximately 3 hours.



## Required skills and job description

In order to ensure that the professional has the minimum skills and knowledge that can be applied in a real environment, the following topics are addressed in the exam:

Module	Job Description	Required skills
<b>1. Foundations of cybersecurity</b>	Understand the technological and security context, the importance of the cyber triad, the complementary requirements and you will discover the concept and application of social engineering.	<ol style="list-style-type: none"><li>1. Definition and importance</li><li>2. Basic concepts</li><li>3. Triad</li><li>4. Requirements</li><li>5. Let's talk about privacy</li><li>6. Social engineering</li></ol>
<b>2. Information security analysis</b>	Identify the purpose, importance, stakeholders and how vulnerability analysis can be evaluated, understanding the security controls in organizations; you will also learn the types of encryption and its functionality and the process to perform risk analysis.	<ol style="list-style-type: none"><li>1. Vulnerability analysis</li><li>2. General security controls</li><li>3. Cryptography</li><li>4. Risk management</li></ol>
<b>3. Policies and regulations</b>	To understand security policies and their fundamental aspects, knowing the most important international standards on the protection and treatment of information and the information security system based on ISO 27001.	<ol style="list-style-type: none"><li>1. Information security policies</li><li>2. International regulations</li></ol>

## Skills Assessment

CertMind performs two types of assessment to ensure that the professional has the required skills:

- 1. Multiple choice questions with only one answer:** this evaluation modality consists of theoretical questions of multiple-choice single answer that seek to measure the degree to which the professional has understood the theoretical concepts of the certification.
- 2. Study case:** Its structure is similar to that of the questions mentioned in the previous section, the difference being that, instead of asking about a particular concept, it presents a description of a situation that takes place in the real context and that must be analyzed by the professional in such a way that he/she can first identify the problem and then evaluate which of the options presented reflects the best solution to the problem situation.

Competition	Questions (1)	Study case(2)
Understand the technological and security context, the importance of the cyber triad, the complementary requirements and you will discover the concept and application of social engineering.	X	
Identify the purpose, importance, stakeholders and how vulnerability analysis can be evaluated, understanding the security controls in organizations; you will also learn the types of encryption and its functionality and the process to perform risk analysis.	X	X
To understand security policies and their fundamental aspects, knowing the most important international standards on the protection and treatment of information and the information security system based on ISO 27001.	X	

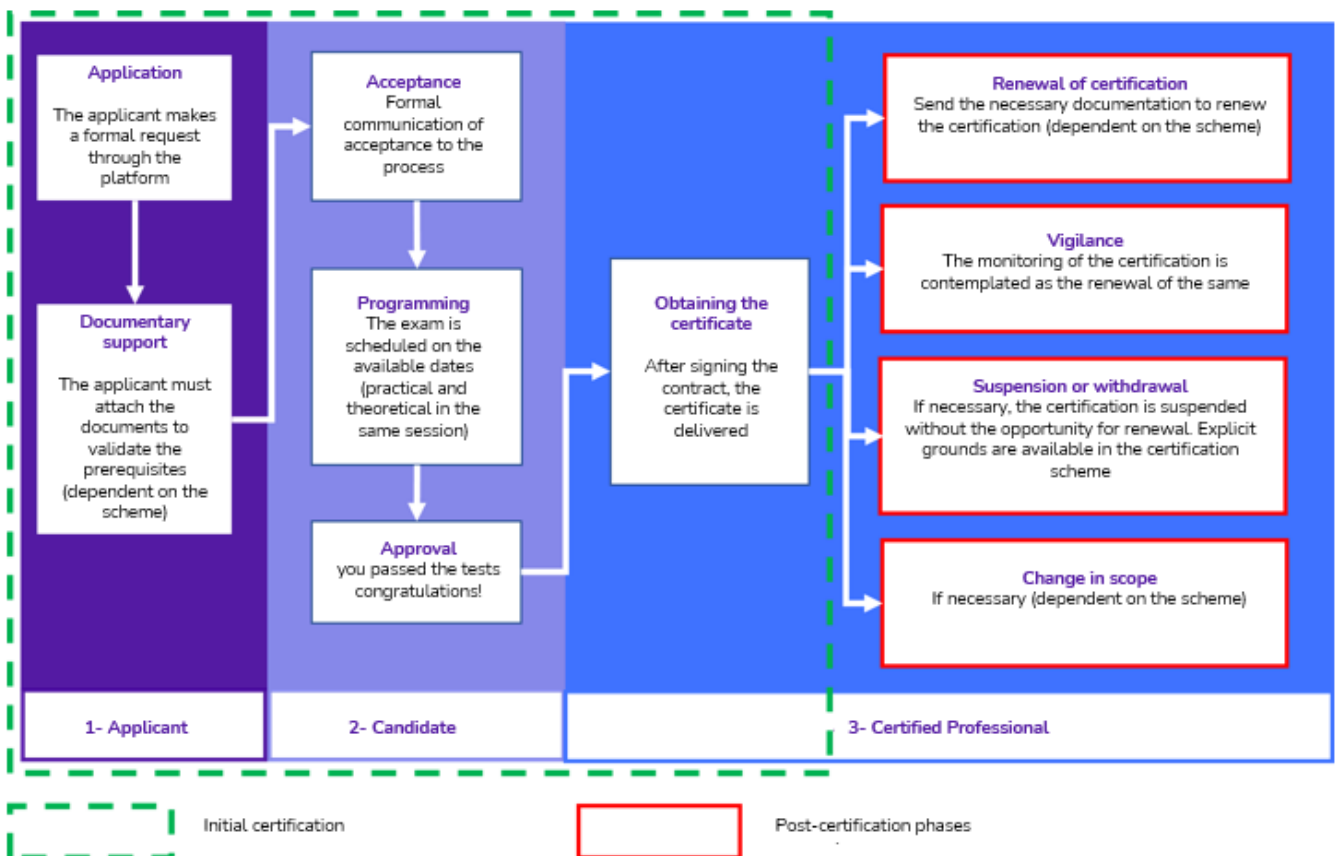
## Who should take this exam?

This exam is ideal for all individuals and teams involved in or familiar with an organization's computing tools and devices.

**Roles as:** Managers, analysts, leaders, specialists, entrepreneurs, IT personnel, software engineers, application and product developers, IT architects, business analysts, system developers and integrators, among others.

## Certification process

The following chart shows the general life cycle for obtaining a certification:



## Certification process

Each of the phases for obtaining certification for the first time is described below; the phases after obtaining the certificate (red-bordered boxes) will be explained later.

- 1. Request for certification:** the applicant submits his or her certification application, on the QuizLab platform or through the partner company (where the applicant has taken his or her training). Once the application is approved, the applicant's profile is created in CertMind.
- 2. Documentary support:** the applicant must attach in the CertMind platform his or her identity document and additionally complete the registration of his or her resume (CV).
- 3. Verification and acceptance:** the platform verifies the applicant's compliance with the prerequisites, once verified, the application is accepted and the applicant becomes a candidate for the certification process.
- 4. Programming:** the call for the presentation of the exam is made, directly on the platform or through its representative. The format of the exam is explained below:
  - **Type:** 25-question, multiple-choice, single-answer online exam.
  - **Duration:** 60 minutes.
  - **Minimum passing grade:** 18/25 or 72%.
  - **Additional time:** If the professional does not take the exam in his/her native language, he/she will have an additional 15 minutes and is also allowed to use a dictionary.
  - **Supervision:** CertMind monitors the tests to ensure that they are performed correctly and transparently through the Invigilator Program (also known as "Proctor"). To learn more about this surveillance mechanism, please visit the following website [www.certmind.org](http://www.certmind.org)
  - **Open book:** No.
  - **Modality:** Available online only on the CertMind platform.
  - **Validity :** 5 Years.
  - **Others:** All applicants are required to read and accept the company's code of ethics and terms and conditions.



## Levels of Difficulty: Bloom's Taxonomy

Bloom's Taxonomy is a theory known in the educational sector because many teachers consider it suitable for evaluating the cognitive level acquired in a subject. The objective of this theory is that after a learning process, the learner acquires new skills and knowledge. The following table presents a description of the categories of Bloom's taxonomy present in the certification exam, as well as a description of in the certification exam, as well as the percentage of each type of question in the exam.

Module	Level 1	Level 2	Level 3
Description	<p><b>Knowledge.</b> It can comprise remembering a wide range of elements, from specific data to complete theory. But all that is needed is to bring to mind the appropriate information.</p>	<p><b>Compression.</b> This can be demonstrated by passing, or translating, material from one form to another (words to numbers), interpreting the material (explaining or summarizing), and estimating future trends (predicting consequences or effects).</p>	<p><b>Application.</b> Refers to the ability or capacity to use the material learned in concrete, new situations.</p>
Percentage of questions present in the exam	40%	40%	20%

**Note:** For more information on the monitoring system visit our web site <https://certmind.org>.

**5. Obtaining the certificate:** once the exam is passed and the terms and conditions contract is accepted, the certification is delivered.



## Renewal, surveillance and withdrawal of certification

This phase occurs after the professional has obtained his or her certification. Renewal refers to the reissuance of the certification once its validity has come to an end. Surveillance refers to CertMind's supervision of the professional's performance during the period between certification and recertification to ensure compliance with the stipulations of this certification scheme. The activities that the certified professional must perform in order to obtain recertification are described below:

**1. Application for recertification:** before the certification becomes invalid, the certified professional submits his or her recertification application on the QuizLab platform. In case the certification loses its validity, the professional must go through the certification process again.

**2. Registration of PUC's:** the certified professional is required to register 12 PUC's every 5 years for certification renewal.

For more information about the Professional Update Credits (PUC) system visit our website <https://certmind.org>. The certified professional must attach the supports that accredit the PUC's in the CertMind platform.

**3. Validation of documentation:** the platform verifies compliance with the PUC's of the certified professional, once verified, the recertification application is accepted.

**4. Obtaining recertification:** Once the documents have been validated, the new certification is delivered.

### Criteria for suspension or withdrawal of certification

Certification will be withdrawn from the professional in the following cases:

1. Failure to comply with the code of ethics.
2. Failure to comply with the requirements of the scheme.
3. Unsatisfactory results of the surveillance process.
4. Inability to continuously meet the competency requirements of the scheme.

### Changes to the certification scheme

The Cybersecurity Essentials certification scheme does not contemplate changes in the scope as there are currently no extensions or reductions in the scope or level of certification..



certm:nd



[www.certmind.org](http://www.certmind.org)

 [b2b@certmind.org](mailto:b2b@certmind.org) – [partner@certmind.org](mailto:partner@certmind.org)

CertMind is a registered trademark of CertMind - Netherlands